

Aseptic-/Hygienic-Flange pipe connections DIN 11853-2 + DIN 11864-2

Art.No

EUR

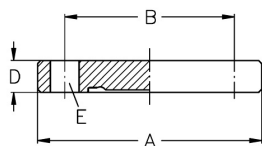
Art.No

EUR

Blind flange with notch ISO (AISI316L-1.4435)

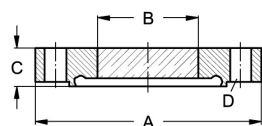
DN	A	B	D	E				AISI316L-1.4435
114,3	168	146	14	8xM10x40				473339 Enquiry

Blind flanges with notch DIN 11853-2 and DIN 11864-2 have the same dimensions.



Flange sight glass with groove, DIN, fused

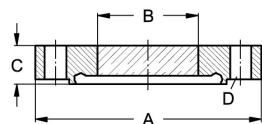
DN	A	B	C	D	bar			1.4462 Borosilicate
40	82	35	14	4xØ9	16			486135 Enquiry
50	94	40	16	4xØ9	16			486136 Enquiry
65	113	45	18	8xØ9	16			486137 Enquiry
80	133	55	20	8xØ11	16			486138 Enquiry
100	159	65	22	8xØ11	10			486139 Enquiry
125	183	75	22	8xØ11	10			486141 Enquiry
150	213	90	25	8xØ14	10			486142 Enquiry



-30 °C up to 280 °C

Flange sight glass with groove, ASME, fused

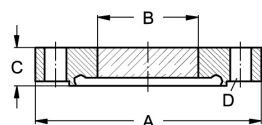
DN	A	B	C	D	bar			1.4462 Borosilicate
2"	92	40	16	4xØ9	16			486205 Enquiry
2,5"	107	45	18	8xØ9	16			486206 Enquiry
3"	125	50	20	8xØ11	16			486207 Enquiry
4"	157	65	22	8xØ11	10			486208 Enquiry



-30 °C up to 280 °C

Flange sight glass with groove, ISO, fused

DN	A	B	C	D	bar			1.4462 Borosilicate
42,4	82	35	14	4xØ9	16			486334 Enquiry
48,3	88	37	14	4xØ9	16			486335 Enquiry
60,3	103	40	16	4xØ9	16			486336 Enquiry
76,1	125	50	20	8xØ11	16			486337 Enquiry
88,9	137	60	20	8xØ11	16			486338 Enquiry
114,3	168	70	22	8xØ11	10			486339 Enquiry



-30 °C up to 280 °C

LINNEMANN
Rohrverbindungen • Edelstahlarmaturen
Pipe connections • Stainless steel fittings

LINNEMANN GmbH • Heerweg 14-16
72070 Tübingen / Germany

Fon: +49 (0) 7071 97555-0
Fax: +49 (0) 7071 97555-10

E-Mail: info@linnemann-online.com
Internet: www.linnemann-online.com